

# SGUVG 2000 /SGUVG 3000



UNIT C1 OYO BUSINESS PARK  
CASTLE VALE  
BIRMINGHAM  
B35 6AN

T: 01675 430 490 W: THESPRINGFIELDGROUP.NET  
E: INFO@THESPRINGFIELDGROUP.NET

## Multi-Assembly In-Duct Modules

- For total design flexibility the SGUVG 2000 and SGUVG 3000 range of sterilisation units are capable of multi-assembly.

This feature ensures our products can match most given air volumes without compromising on sterilisation efficiency.

- For further bespoke applications contact Purified Air Sales team for assistance.

- For technical information on SGUVG 2000 and SGUVG 3000 products see the relevant individual technical specification sheets.

Note! SGUVG 2000 air duties based on  
20Pa SGUVG 3000 air duty based on 35  
Pa total.



SGUVG 3000/3 shown as example  
only (Optimum duty: 2.4 m³/s.)

Model	Air volume (m³/s - cfm) Optimum - Max Duty	Duct Connection W x H (mm)	Weight	Watts		Joint Kit Sets.
				SGUVG 2000	SGUVG 3000	
SGUVG 2000/2 or SGUVG 3000/2	1.6 - 1.8 m³/s (3,390 - 3,814 cfm)	1160 X 350	75 kg 85 kg	560 1120	2 x floor channel 2 x top/bottom jointing plate	
SGUVG 2000/4 or SGUVG 3000/4	3.2 - 3.6 m³/s (6,780 - 7,628 cfm)	1160 X 760	150 kg 170 kg	1120 2240	2 x floor channel 2 x top/bottom jointing plate 2 x side jointing plate 2 x centre plate	
SGUVG 2000/6 or SGUVG 3000/6	4.8 - 5.4 m³/s (10,170 - 11,442 cfm)	1160 X 1170	220 kg 250 kg	1680 3360	2 x floor channel 2 x top/bottom jointing plate 4 x side jointing plate 4 x centre plate	
SGUVG 2000/8 or SGUVG 3000/8	6.4 - 7.2 m³/s (13,560 - 15,256 cfm)	1160 X 1580	290 kg 330 kg	2240 4480	2 x floor channel 2 x top/bottom jointing plate 6 x side jointing plate 6 x centre plate	
SGUVG 2000/10 or SGUVG 3000/10	8.0 - 9.0 m³/s (16,951 - 19,070 cfm)	1160 X 1990	360 kg 410 kg	2800 5600	2 x floor channel 2 x top/bottom jointing plate 8 x side jointing plate 8 x centre plate	
SGUVG 2000/12 or SGUVG 3000/12	9.6 - 10.8 m³/s (20,342 - 22,884 cfm)	1160 X 2400	430 kg 490 kg	3360 6720	2 x floor channel 2 x top/bottom jointing plate 10 x side jointing plate 10 x centre plate	
SGUVG 2000/14 or SGUVG 3000/14	11.2 - 12.6 m³/s (23,733 - 26,698 cfm)	1160 X 2810	505 kg 575 kg	3920 7840	2 x floor channel 2 x top/bottom jointing plate 12 x side jointing plate 12 x centre plate	

**Important!** For air duties greater than 12.6 m³/s (26,700 cfm) twin disinfection banks in a bifurcated format should be used (See Assembly Option sheet for details)

Important! The operation of this unit must be inter-locked with the airflow such that in the event of 'airflow failure' the unit will automatically switch off to protect the lamps.  
Note: For multi-assembly modules each unit should be provided with an individual fused spur.

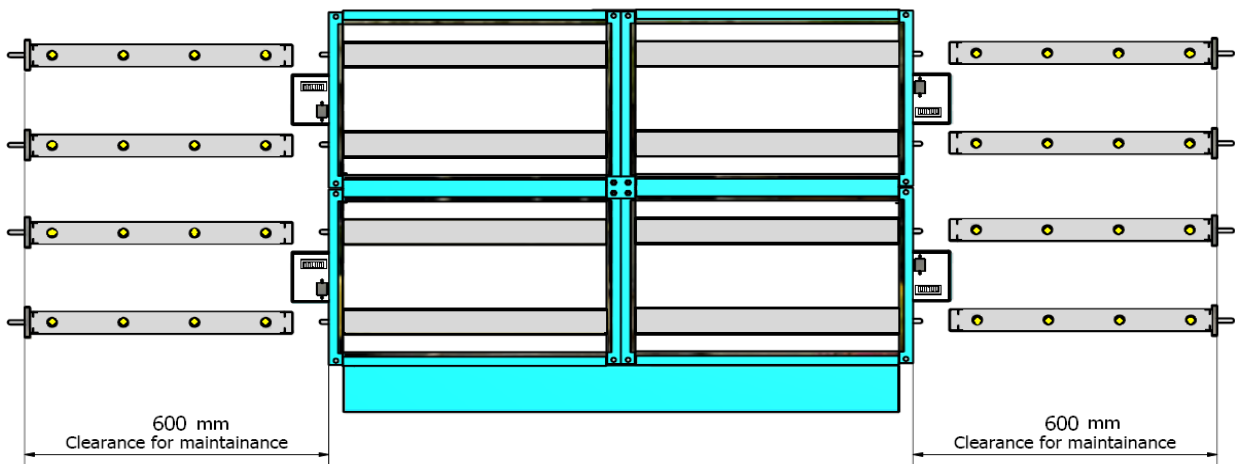
# SGUVG 2000 / SGUVG 3000



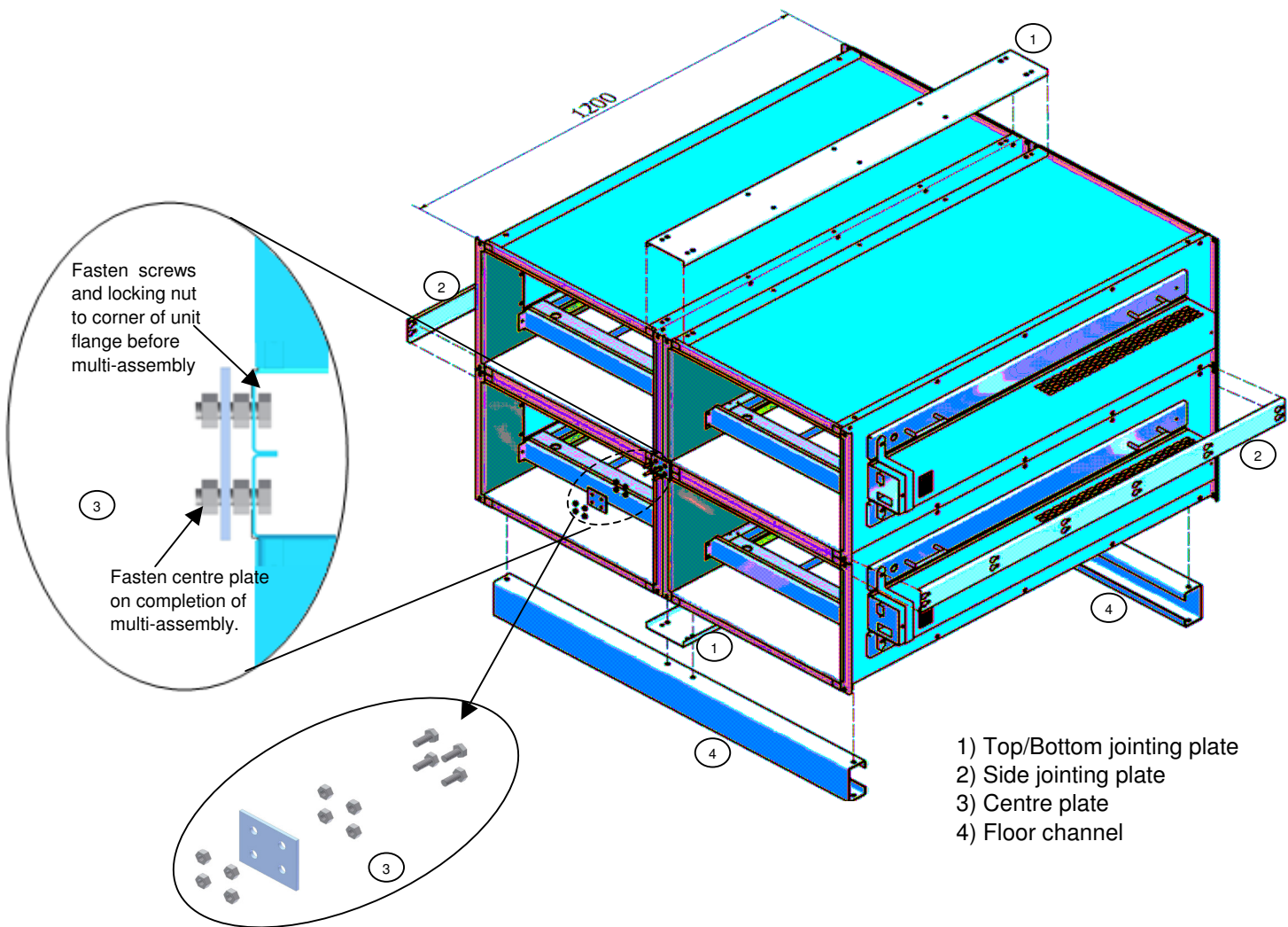
UNIT C1 OYO BUSINESS PARK  
CASTLE VALE  
BIRMINGHAM  
B35 6AN

T: 01675 430 490 W: THESPRINGFIELDGROUP.NET  
E: INFO@THESPRINGFIELDGROUP.NET

## Multi-Assembly In-Duct Modules



\* SGUVG 3000/4 shown as example only.



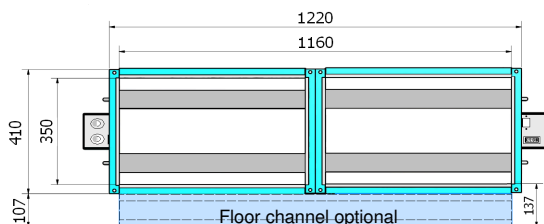
# SGUVG 2000 / SGUVG 3000



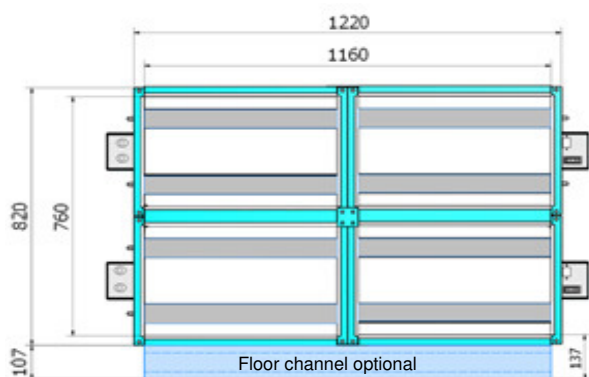
## Multi-Assembly In-Duct Modules

UNIT C1 OYO BUSINESS PARK  
CASTLE VALE  
BIRMINGHAM  
B35 6AN

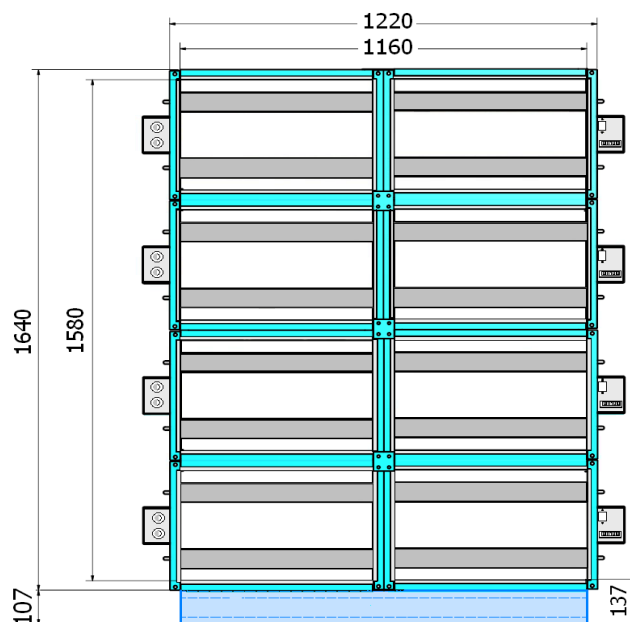
T: 01675 430 490 W: THESPRINGFIELDGROUP.NET  
E: INFO@THESPRINGFIELDGROUP.NET



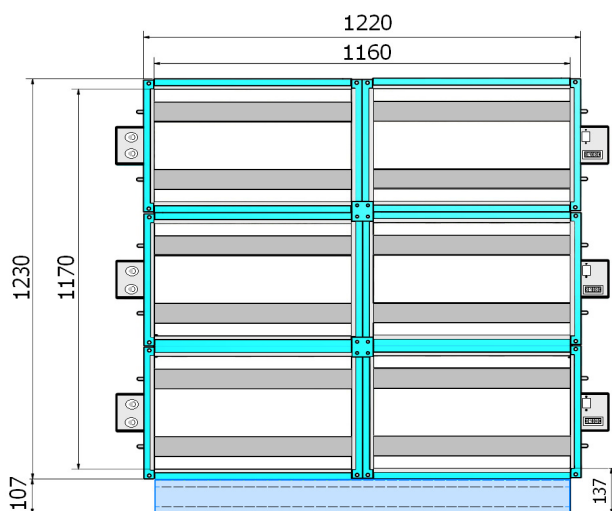
**SGUVG 3000/2**



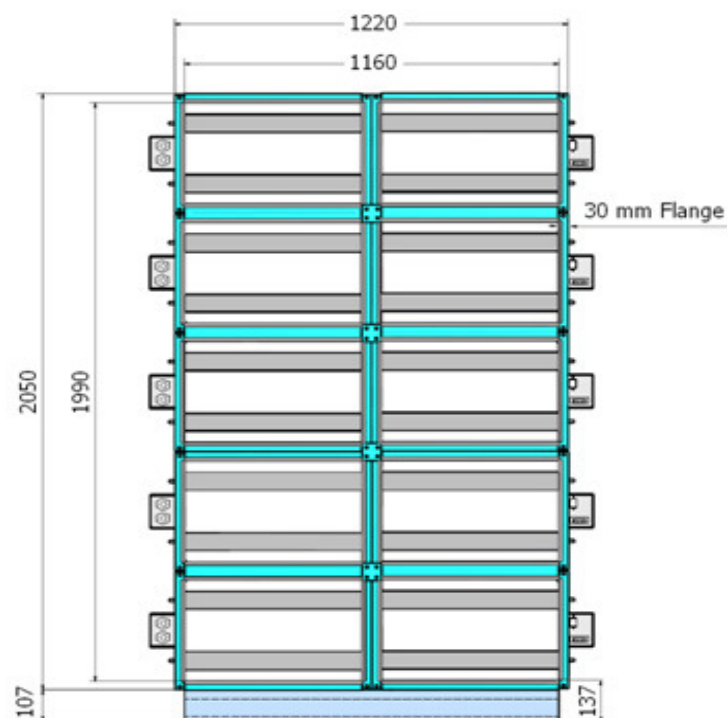
**SGUVG 3000/4**



**SGUVG 3000/8**



**ASU 3000/6**



**ASU 3000/10**

Note: Sketch details indicated above are examples only.  
Further modules can be assembled according to air duty  
requirement as indicated on detail schedule.

Note: Care should be taken with any duct connection onto the  
modular assembly to ensure that an even distribution of air is  
created across the individual modules.

# SGUVG 2000 / SGUVG 3000

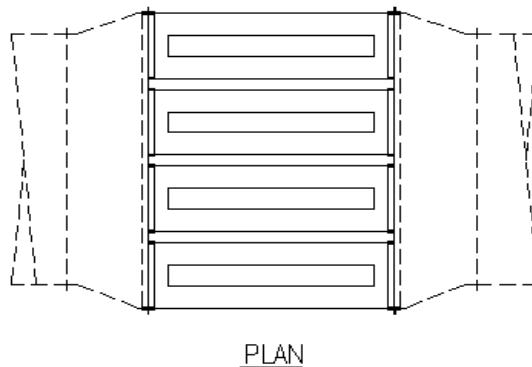
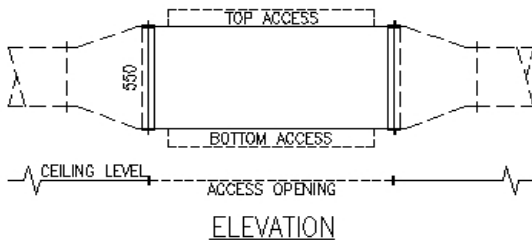
## Multi Assembly In Duct Modules

### Assembly Option Guide



UNIT C1 OYO BUSINESS PARK  
CASTLE VALE  
BIRMINGHAM  
B35 6AN

T: 01675 430 490 W: THESPRINGFIELDGROUP.NET  
E: INFO@THESPRINGFIELDGROUP.NET



#### Multi-Assembly for either top or bottom lamp access.

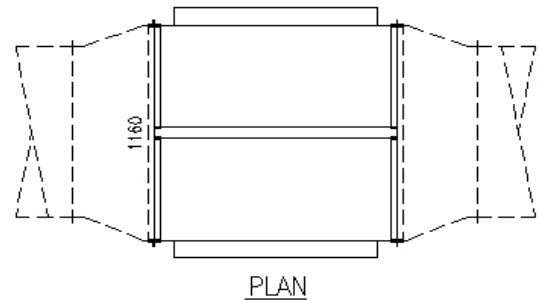
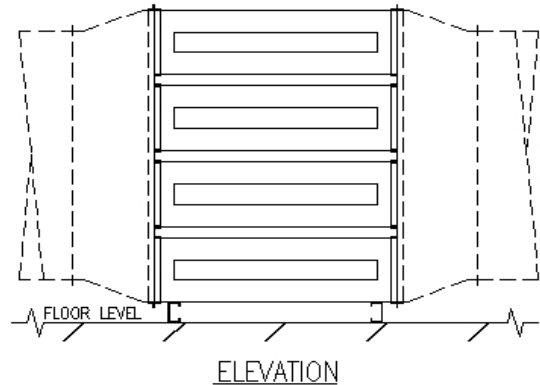
Duty Range:

SGUVG 2000 or 3000 /2 (1160mm W x 550mm D)

Minimum Duty: 1.6 - 1.8 m<sup>3</sup>/s (3,390 - 3,815 cfm)

To

Maximum Duty: Restricted by access or physical limitations only.



#### Multi-Assembly stack with double sided lamp access.

Duty Range:

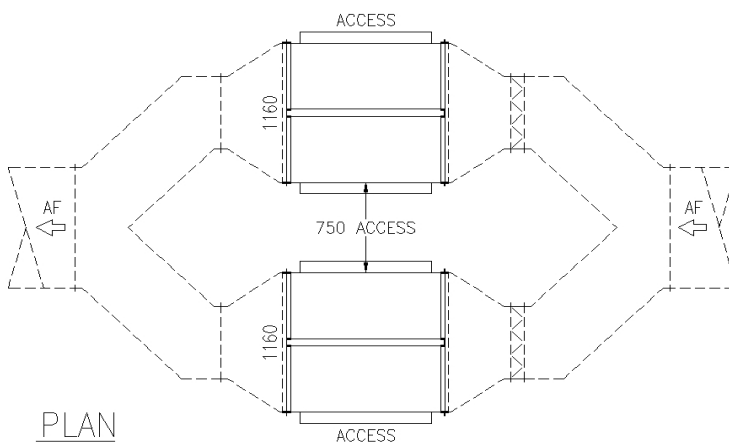
SGUVG 2000 or 3000 /2 (1160mm W x 550mm D)

Minimum Duty: 1.6 - 1.8 m<sup>3</sup>/s (3,390 - 3,815 cfm)

To

SGUVG 2000 or 3000/14 (1160mm W x 2810mm H)

Maximum Duty: 11.2 - 12.6m<sup>3</sup>/s (23,730 - 26,700 cfm)



#### Bifurcated multi-assembly arrangement.

For air duties above 12.6 m<sup>3</sup>/s to 25.2 m<sup>3</sup>/s  
(23,730 - 53,400 cfm)

For duties above 25.2 m<sup>3</sup>/s (53,400 cfm) refer to Purified Air sales team for options.

#### General Note:

For optimum disinfection ensure all air is distributed evenly across all UV cells.